



Regional Council of Mayors

April 2012

The nationally recognized Regional Council of Mayors was formed in 2005 and is supported by the Urban Land Institute Minnesota. It includes Minneapolis, Saint Paul and 47 municipalities in the developed and developing suburbs. This collaborative partnership provides a nonpartisan platform focused on building action strategies to raise the region's overall economic competitiveness, innovation and quality of life.

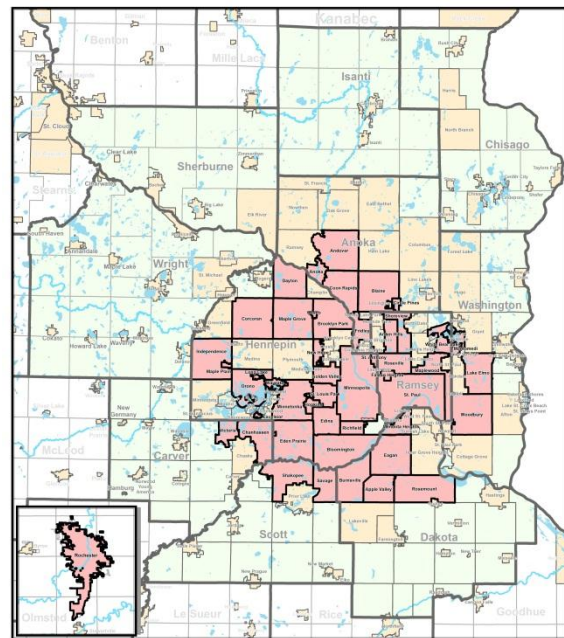
Co-chairs:

Mayor James Hovland, Edina
Mayor Sandy Martin, Shoreview

Committee co-chairs:

Mayor Debbie Goettel, Richfield, Environment
Mayor Mike Maguire, Eagan, Housing
Mayor Terry Schneider, Minnetonka, CTLUS
Mayor Gene Winstead, Jobs

Mayor Doug Anderson, Dayton
Mayor Dave Bartholomay, Circle Pines
Mayor Ardell Brede, Rochester
Mayor Chris Coleman, Saint Paul
Mayor William Droste, Rosemount
Mayor Jo Emerson, White Bear Lake
Mayor Jerry Faust, St. Anthony
Mayor Tom Furlong, Chanhassen
Mayor Mike Gamache, Andover
Mayor Mary Giuliani Stephens, Woodbury
Mayor David Grant, Arden Hills
Mayor Ken Guenther, Corcoran
Mayor Mary Hamann-Roland, Apple Valley
Mayor Shep Harris, Golden Valley
Mayor Mary Hershberger Thun, Victoria
Mayor Kathi Hemken, New Hope
Mayor Tim Howe, Coon Rapids
Mayor Tim Hultmann, City of Long Lake
Mayor Jeff Jacobs, St. Louis Park
Mayor Marvin Johnson, Independence
Mayor Dean Johnston, Lake Elmo
Mayor Elizabeth Kautz, Burnsville
Mayor Sandra Krebsbach, Mendota Heights
Mayor Peter Lindstrom, Falcon Heights
Mayor Alan Lindquist, Osseo
Mayor Scott Lund, Fridley
Mayor Jeffrey Lunde, Brooklyn Park



Participating Cities
Regional Council of Mayors



Mayor Ken Guenther, Corcoran
Mayor Judson Marshall, Mahtomedi
Mayor Gene Maxwell, Hopkins
Mayor Lili McMillan, Orono
Mayor Phil Rice, Anoka
Mayor Dan Roe, Roseville
Mayor Will Roszbach, Maplewood
Mayor Nick Ruehl, Excelsior
Mayor Tom Ryan, Blaine
Mayor R. T. Rybak, Minneapolis
Mayor Mark Steffenson, Maple Grove
Mayor John Sweeney, Maple Plain
Mayor Brad Tabke, Shakopee
Mayor Nancy Tyra-Lukens, Eden Prairie
Mayor Ken Willcox, Wayzata
Mayor Janet Williams, Savage



Minnesota

April 2012

ULI Minnesota actively engages public and private sector leaders to foster collaboration, share knowledge and join in meaningful strategic action to position our region for economic growth and prosperity.

Advisory Board:

Colleen Carey, Chair, The Cornerstone Group
John Breitinger, Vice Chair of Mission Advancement, Cushman & Wakefield
Elizabeth Ryan, Treasurer, Family Housing Fund
John Shardlow, Governance Chair and Environment Co-chair, Stantec
Mayor Jim Hovland, RCM Co-chair, City of Edina
Mayor Sandy Martin, RCM Co-chair, City of Shoreview
Mayor Elizabeth Kautz, RCM Immediate Past Co-chair, City of Burnsville
Sean Sweeney, YLG Co-chair, Timberland Partners
Maureen Michalski, YLG Co-chair, Schafer Richardson, Inc.
Stuart Ackerberg, Sponsorship Chair, The Ackerberg Group
Robert Close, Education Co-chair, AECOM
Robert Engstrom, ULI Life Trustee, Robert Engstrom Companies
Chris Kennelly, UrbanPlan Chair, The Excelsior Group
Carolyn Olson, Housing Initiative Co-chair, Greater Metropolitan Housing Corporation
Jay Lindgren, Connecting Transportation & Land Use Systems (CTLUS) Co-chair, Dorsey & Whitney
Eliza Clark, Communications, Paydirt, LLC

Bake Baker, McGough
Collin Barr, Ryan Companies
Cecile Bedor, City of Saint Paul
Tom Fisher, University of Minnesota College of Design
Warren Hanson, Greater Minnesota Housing Fund
Sarah Harris, Downtown Improvement District
Curtis Johnson, Citistates Group
Nick Koch, HGA Architects and Engineers
Michael Lander, Lander Group
Tom Lander, Mortenson
Pat Mascia, Duke Realty
Commissioner Jim McDonough, Ramsey County
Commissioner Peter McLaughlin, Hennepin County
Ted Mondale, GREATER MSP and the Metropolitan Sports Facilities Commission
Tim Murnane, OPUS Group
Diane Norman, RSP Architects
Kevin Ringwald, City of Chaska
Dr. Carissa Schively Slotterback, University of Minnesota Humphrey Institute of Public Affairs
Irene Quarshie, Target
Janelle Waldock, Blue Cross and Blue Shield of Minnesota

ULI MN Staff:

Caren Dewar, Executive Director
Pat Arnst, District Council Coordinator
Cathy Bennett, Housing Initiative
Katherine Anderson, Associate
