

A graphic element for the "Thrive MSP 2040" logo, consisting of a white outline of a city skyline with a blue wavy line underneath, and the year "2040" in blue to the right.

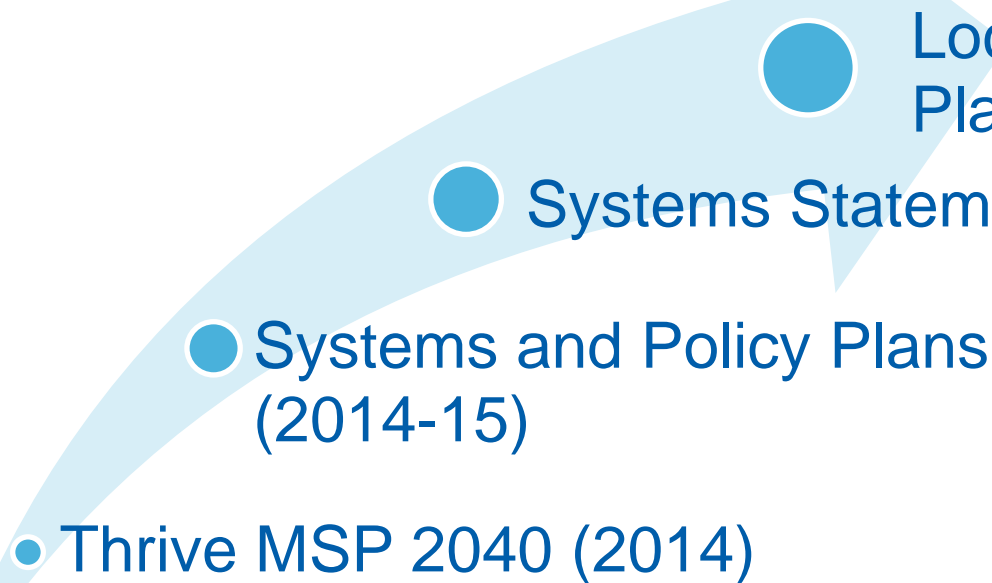
Thrive MSP
ONE VISION, ONE METROPOLITAN REGION



What is *Thrive MSP 2040?*

- The long-range plan that creates a **vision** for the seven-county region for the next 30 years
- The update to the 2030 Regional Development Framework that provides the **policy direction** for the next round of the Council's systems and policy plans

Regional Planning Cycle

- 
- Local Comprehensive Plan Updates (2018)
 - Systems Statements (2015)
 - Systems and Policy Plans (2014-15)
 - Thrive MSP 2040 (2014)



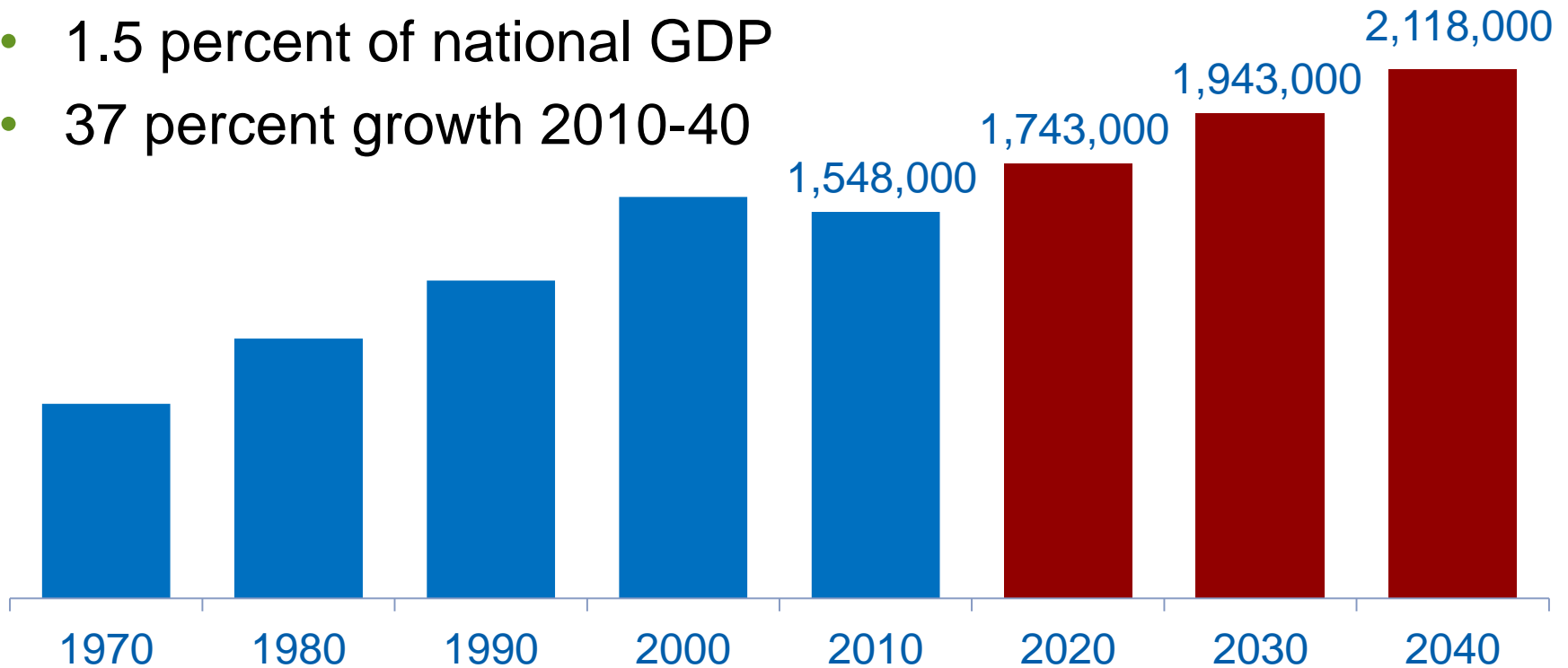
What is *Thrive MSP 2040*?

The goal of *Thrive MSP 2040* is to help our region **maximize opportunities for growth and prosperity** for the coming decades.



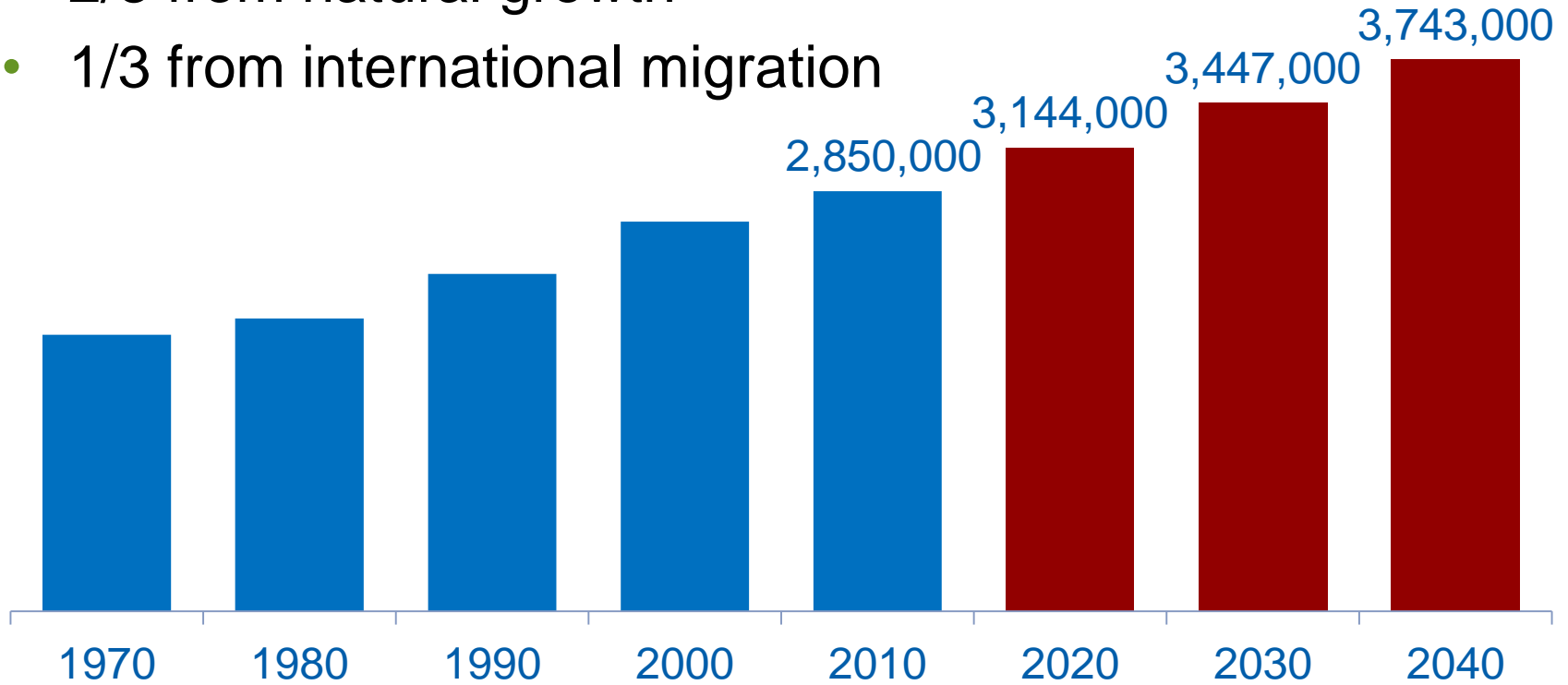
Economic competitiveness drives the forecast outcomes

- 1.5 percent of national GDP
- 37 percent growth 2010-40

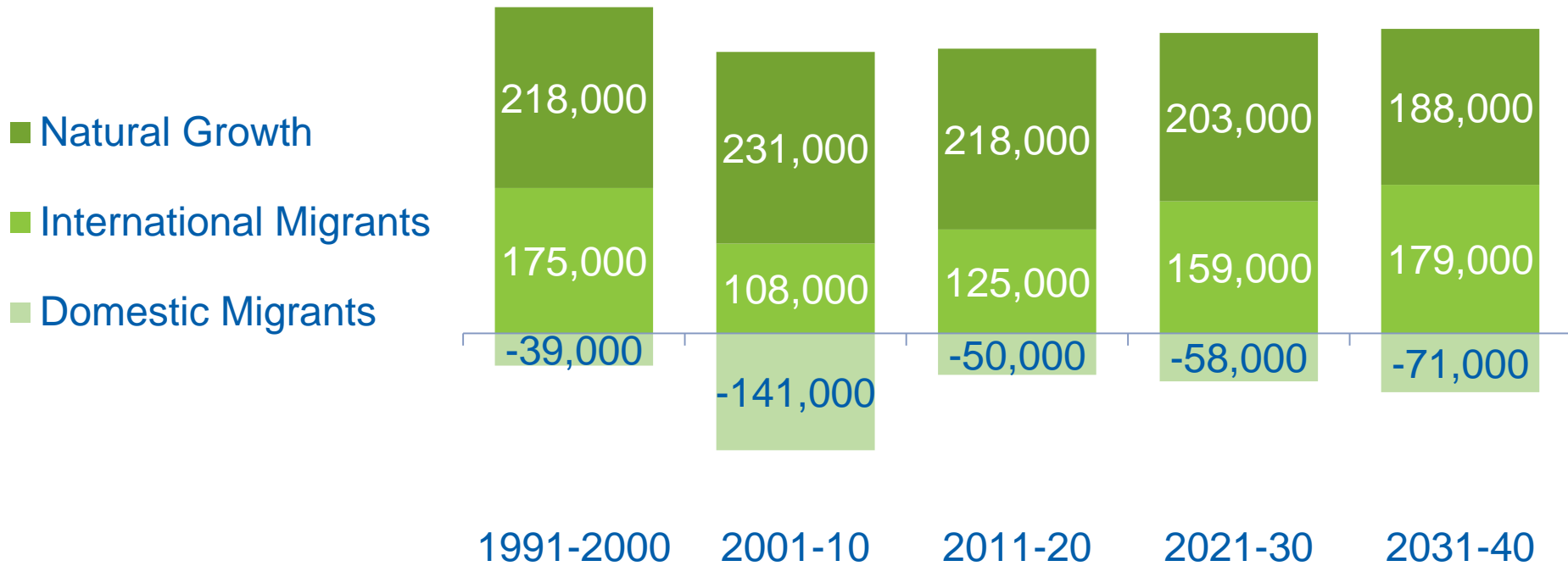


Population forecasted to grow 31%

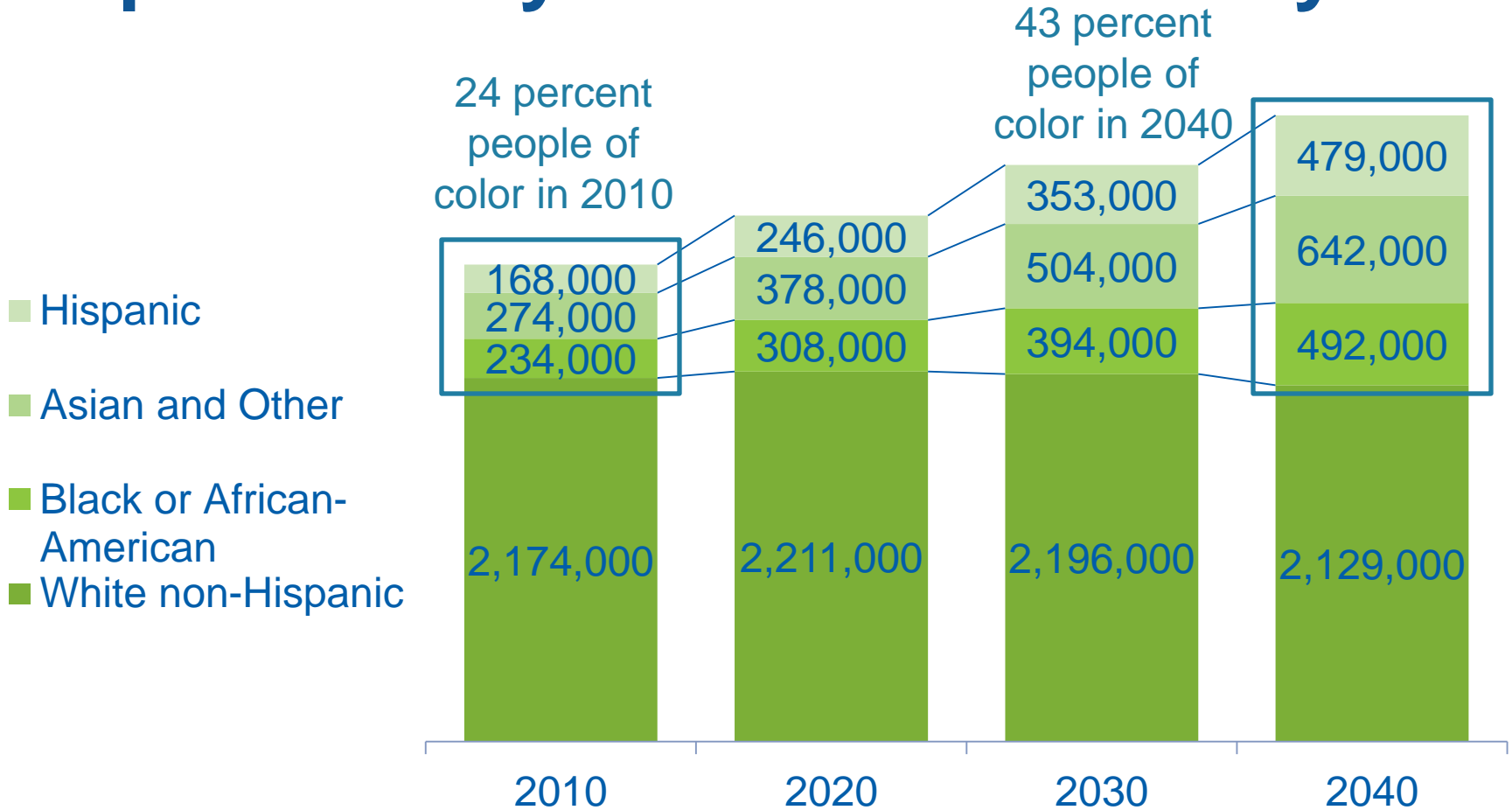
- 2/3 from natural growth
- 1/3 from international migration



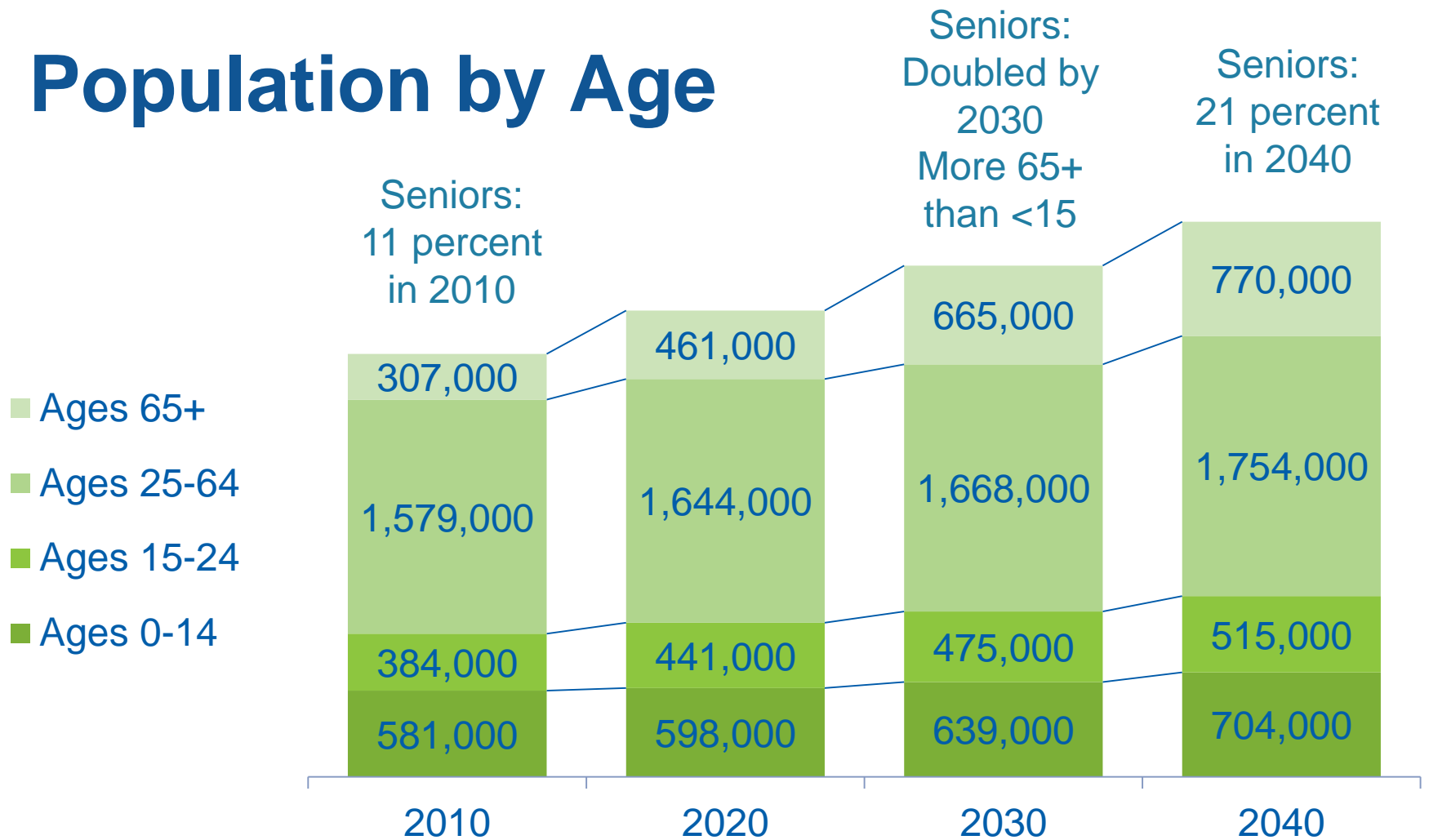
Significant International Immigration, but also Net Loss of Domestic Movers



Population by Race and Ethnicity

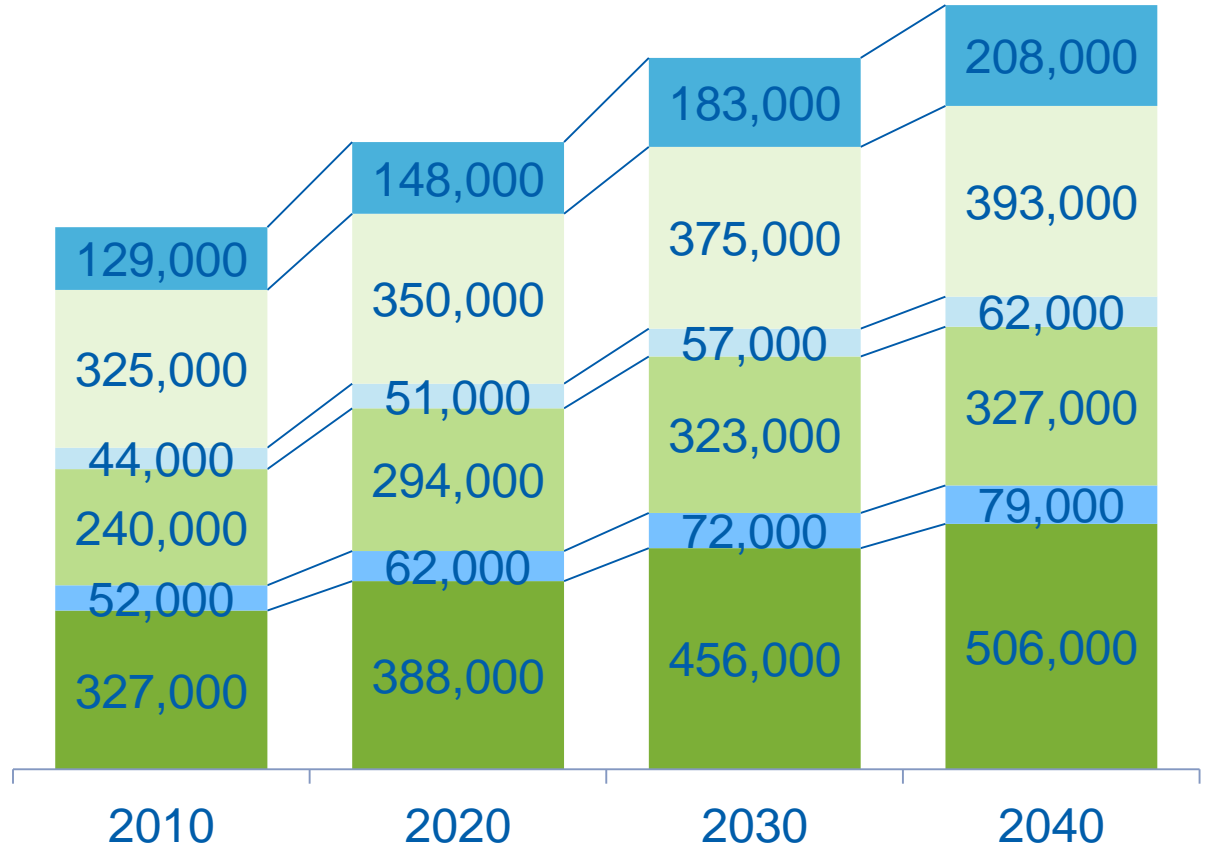


Population by Age

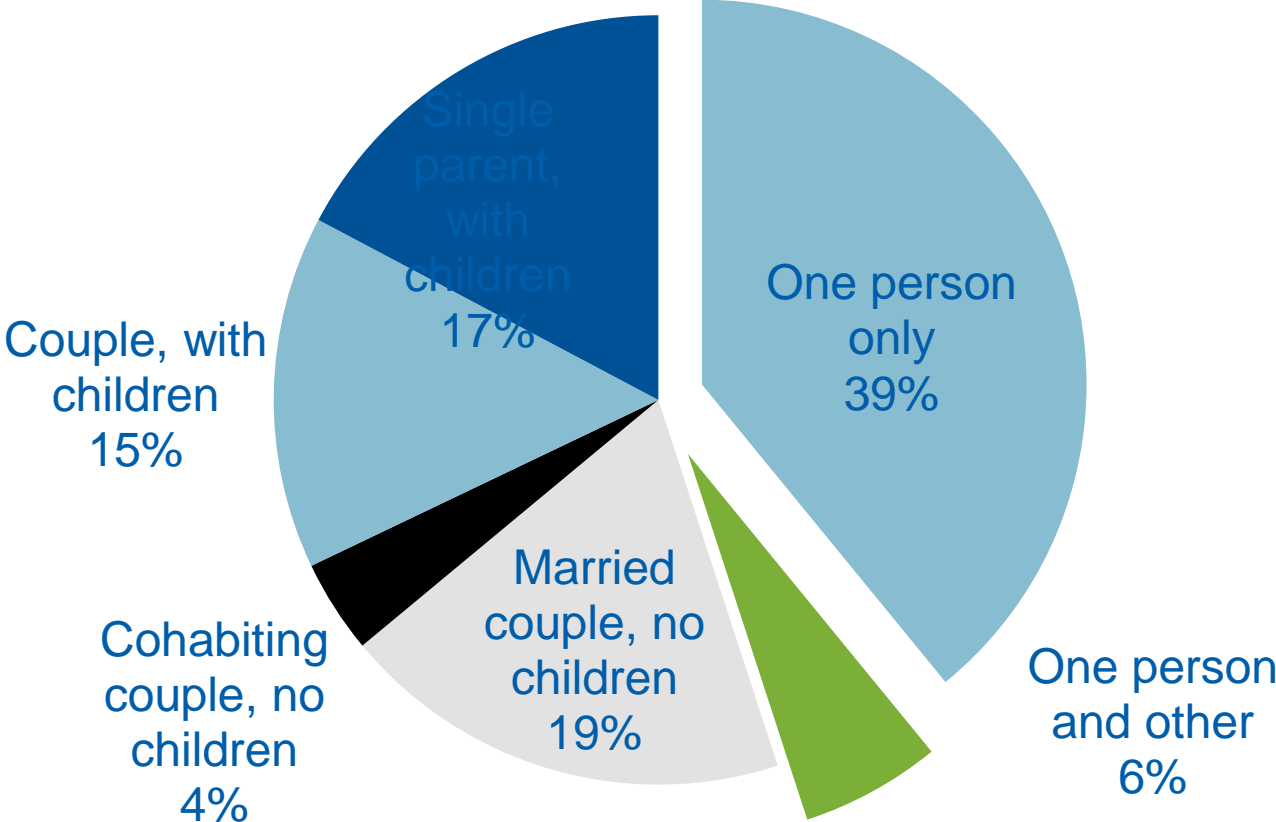


Households forecasted to grow 41%

- Single parent, with children
- Couple, with children
- Cohabiting couple, no children
- Married couple, no children
- One person and other
- One person only



Composition of Household Growth





One Vision – One Metropolitan Region

The region's
prosperity is
important to
everyone – local
officials, residents,
business owners,
community leaders.



Opportunities for collaboration

Thrive MSP 2040 is the opportunity to define and achieve goals **too big for any one community** to take on, but **possible to accomplish as a region.**



Opportunities for input into *Thrive MSP 2040*



- **Today**
- **Early 2013:** Feedback on Principles, Goals, and Alternative Policy Scenarios
- **Summer 2013:** Preferred Policy Scenario
- **October 2013:** Public Meetings

What does the region need to thrive?



- What are the major **issues and challenges** facing the region in the next 30 years?
- What **policies from previous plans** should we keep/adjust? Discontinue? What would you add?
- What criteria should we use in **resolving tensions between regional goals and policies**?
- What **advice** do you have as the Council develops the Thrive MSP 2040 plan?



We want to hear from you!

- Thrivemsp.org
- Twitter hashtag: #thrivemsp
- Send us your suggestions:
- thriveMSP@metc.state.mn.us