

## Regional Council of Mayors

The nationally recognized Regional Council of Mayors was formed in 2005 and is supported by the Urban Land Institute Minnesota. It includes Minneapolis, Saint Paul and 49 municipalities in the developed and developing suburbs. This collaborative partnership provides a nonpartisan platform focused on building action strategies to raise the region's overall economic competitiveness, innovation and quality of life.

### RCM Co-chairs



Mayor James Hovland  
City of Edina



Mayor Sandy Martin  
City of Shoreview

**Convene:** Bring Mayors and cross sector leadership together around issues of regional significance.

**Educate:** Equip Mayors to lead and support learning across sectors.

**Engage:** Support civic outreach strategies.

**Effect Change:** Seek solutions that support a 'better way' for collective regional action.

### Four priority initiatives:

**Housing:** partnering to implement tools and strategies that support a full range of housing choices in connected, livable communities.

**Transportation:** building on national and regional best practices to connect transportation and land use systems.

**Environment:** promoting action strategies that reduce greenhouse gas emissions, protect natural resources, and support healthy living.

**Job Growth:** fostering regional collective action to strengthen economic competitiveness and job growth.



*"We can learn a great deal from one another and have an impact beyond the boundaries of our respective communities."*

-Mayor Sandy Martin, City of Shoreview

ULI Minnesota actively engages public and private sector leaders to foster collaboration, share knowledge and join in meaningful strategic action to position our region for economic growth and prosperity.

**RCM Co-chairs:**

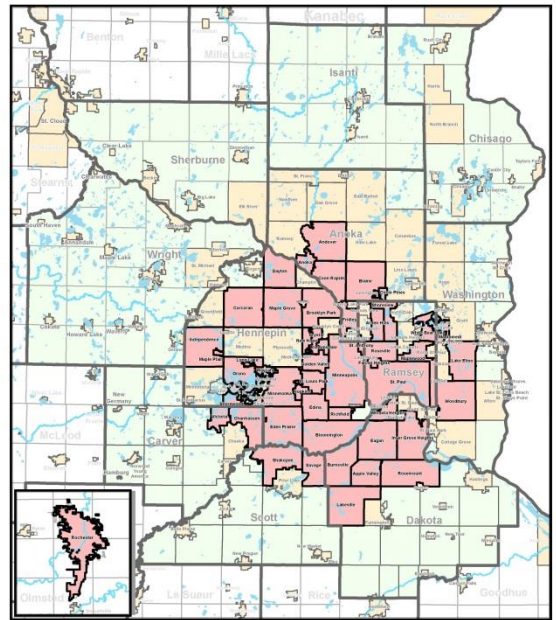
Mayor James Hovland, Edina  
 Mayor Sandy Martin, Shoreview

**RCM Committee Co-chairs:**

Mayor Debbie Goettel, Richfield, Environment  
 Mayor Mike Maguire, Eagan, Housing  
 Mayor Terry Schneider, Minnetonka, CTLUS  
 Mayor Elizabeth Kautz, Burnsville, Jobs

**RCM Members:**

Mayor Jim Adams, Crystal  
 Mayor Dave Bartholomay, Circle Pines  
 Mayor Ardell Brede, Rochester  
 Mayor Chris Coleman, Saint Paul  
 Mayor William Droste, Rosemount  
 Mayor Jo Emerson, White Bear Lake  
 Mayor Jerry Faust, St. Anthony  
 Mayor Tom Furlong, Chanhassen  
 Mayor Mike Gamache, Andover  
 Mayor Mary Giuliani Stephens, Woodbury  
 Mayor David Grant, Arden Hills  
 Mayor Ken Guenther, Corcoran  
 Mayor Roger Hackbarth, Maple Plain  
 Mayor Mary Hamann-Roland, Apple Valley  
 Mayor Shep Harris, Golden Valley  
 Mayor Kathi Hemken, New Hope  
 Mayor Tim Howe, Coon Rapids  
 Mayor Tim Hultmann, City of Long Lake  
 Mayor Jeff Jacobs, St. Louis Park  
 Mayor Marvin Johnson, Independence  
 Mayor Sandra Krebsbach, Mendota Heights  
 Mayor Matt Little, Lakeville  
 Mayor Peter Lindstrom, Falcon Heights  
 Mayor Scott Lund, Fridley  
 Mayor Jeffrey Lunde, Brooklyn Park  
 Mayor Judson Marshall, Mahtomedi  
 Mayor Gene Maxwell, Hopkins



**Participating Cities**  
 Regional Council of Mayors

Legend:  
 ■ Participating Cities (Red)  
 ■ Other Cities (Yellow)  
 ■ RCM Counties (Green)  
 □ Township Boundary (White outline)  
 ■ Lakes (Blue)  
 ■ Rivers (Light Blue)

Scale: 0 to 10 Miles  
 March 26, 2013  
 Map Courtesy of Statemaps.com

Mayor Lili McMillan, Orono  
 Mayor Tim McNeil, Dayton  
 Mayor Regan Murphy, Robbinsdale  
 Mayor Tom O'Connor, Victoria  
 Mayor Mike Pearson, Lake Elmo  
 Mayor Duane Poppe, Osseo  
 Mayor Phil Rice, Anoka  
 Mayor Dan Roe, Roseville  
 Mayor Will Rossbach, Maplewood  
 Mayor Tom Ryan, Blaine  
 Mayor R. T. Rybak, Minneapolis  
 Mayor Mark Steffenson, Maple Grove  
 Mayor Brad Tabke, Shakopee  
 Mayor George Tourville, Inver Grove Heights  
 Mayor Nancy Tyra-Lukens, Eden Prairie  
 Mayor Ken Willcox, Wayzata  
 Mayor Janet Williams, Savage  
 Mayor Gene Winstead, Bloomington  
 Mayor Scott Zerby, Shorewood

**Contact ULI Minnesota:**

81 S 9th Street #310  
 Minneapolis, MN 55402  
 612.338.1332  
<http://minnesota.uli.org>

**RCM /ULI Minnesota Contacts:**

Caren Dewar  
 Executive Director  
[Caren.dewar@uli.org](mailto:Caren.dewar@uli.org)  
 612.759.1016

Aubrey Austin  
 Associate  
[Aubrey.austin@uli.org](mailto:Aubrey.austin@uli.org)  
 612.338.1332